

RÉSERV

BY  DIAN ISTANA

Contemporary Zen Living



RÉSERV

CONCEPT

IMAGINED BY  DIAN ISTANA

RESERV is the crown jewel of Dian Istana, a sanctuary of exclusivity and refined living. Perfectly positioned as the most forward-facing cluster, it offers not only prestige but also unmatched convenience and connectivity. Each home is meticulously planned to face either north or south, a hallmark of thoughtful design that ensures comfort, balance & timeless elegance.

/CONTEMPORARY
ZEN LIVING
REDEFINED

RÉSERV

CONCEPT

IMAGINED BY  DIAN ISTANA

1/ CONTEMPORARY ZEN LIVING

Discover a new standard of harmony & sophistication at Dian Istana's latest residential cluster - a serene enclave inspired by the timeless elegance of Zen philosophy and the clean aesthetic of contemporary design. Designed for those who seek balance between urban living & mindful calm, this development reimagines home as a sanctuary - where simplicity meets elegance.

2/ HARMONIOUS WELLNESS

Beyond aesthetics, the cluster embodies a contemporary lifestyle of wellness & harmony. With thoughtfully curated amenities - yoga decks, meditation corners & wellness pathways - residents are encouraged to slow down, breathe & live with intention.

3/ BEYOND LOCATION

Nestled in the most front prestigious Dian Istana development, a perfect address as distinguished as its residents.

RÉSERV

FEATURES

IMAGINED BY  DIAN ISTANA

RESERV FEATURES

- DIAN ISTANA NEW CLUB HOUSE
- LIMITED EXCLUSIVE UNITS
- 24-HOUR MODERN SECURITY
- THE CĒNTRAL COMMERCIAL
- THE BBQ AREA
- ZEN PARK



RÉSERV

CLUSTER
MAIN GATE

IMAGINED BY  DIAN ISTANA

RÉSERV /
DIAN ISTANA'S MOST
PRESTIGIOUS ADDRESS

The cluster welcomes you with a grand 15-meter ROW gate, setting the tone for a life of distinction. The security features in **RÉSERV** is one gate security system, access card entry & CCTV area.

RÉSERV
CLUB HOUSE

IMAGINED BY  DIAN ISTANA



Residents of **RESERV** will enjoy direct access to Dian Istana's new clubhouse - an oasis of recreation and community - as well as seamless connectivity to the estate's vibrant commercial areas. Embracing a Modern Zen Living concept, **RESERV** harmonizes contemporary architecture with serene green spaces, creating a haven where modern families can thrive, rejuvenate & celebrate life's finest moments.

RÉSERV

CLUSTER
FEATURES

IMAGINED BY  DIAN ISTANA

COMMUNITY PARK

RESERV cluster isn't just a place to live. It's a philosophy of living well, designed for modern individuals who value balance, beauty & inner calm in the heart of the city.

RÉSERV

CLUSTER
FEATURES

IMAGINED BY  DIAN ISTANA

COMMUNITY PARK



RÉSERV

DESIGN +
ARCHITECT

IMAGINED BY  DIAN ISTANA

/CRAFTED WITH PASSION

Crafted by renowned Indonesian Architect **Han Darmawan**, every detail of this home reflects a deep passion for design and a vision of refined living. Thoughtfully planned to balance beauty and function, **RÉSERV** features a **multifunction room on the ground floor** - ideal for work, play, or gatherings - and **2 master bedrooms designed for comfort & privacy**. At the pinnacle of the home lies the **Grand Master Bedroom**, complete with **the largest walk in closet in its class**, offering unmatched sense of luxury & exclusivity. A dedicated & separate service area ensures seamless daily living, maintaining both elegance & practicality in perfect harmony.

RÉSERV

RESIDENCE
TYPE

IMAGINED BY  DIAN ISTANA

Each residence features clean architectural lines, open spaces & natural materials that invite light, air & a sense of stillness into everyday life. The landscape harmoniously integrates minimalist gardens, water elements & communal green areas, fostering an atmosphere of peace & connection with nature.

LB	LT
350	225

 4+1

 5+1

 2

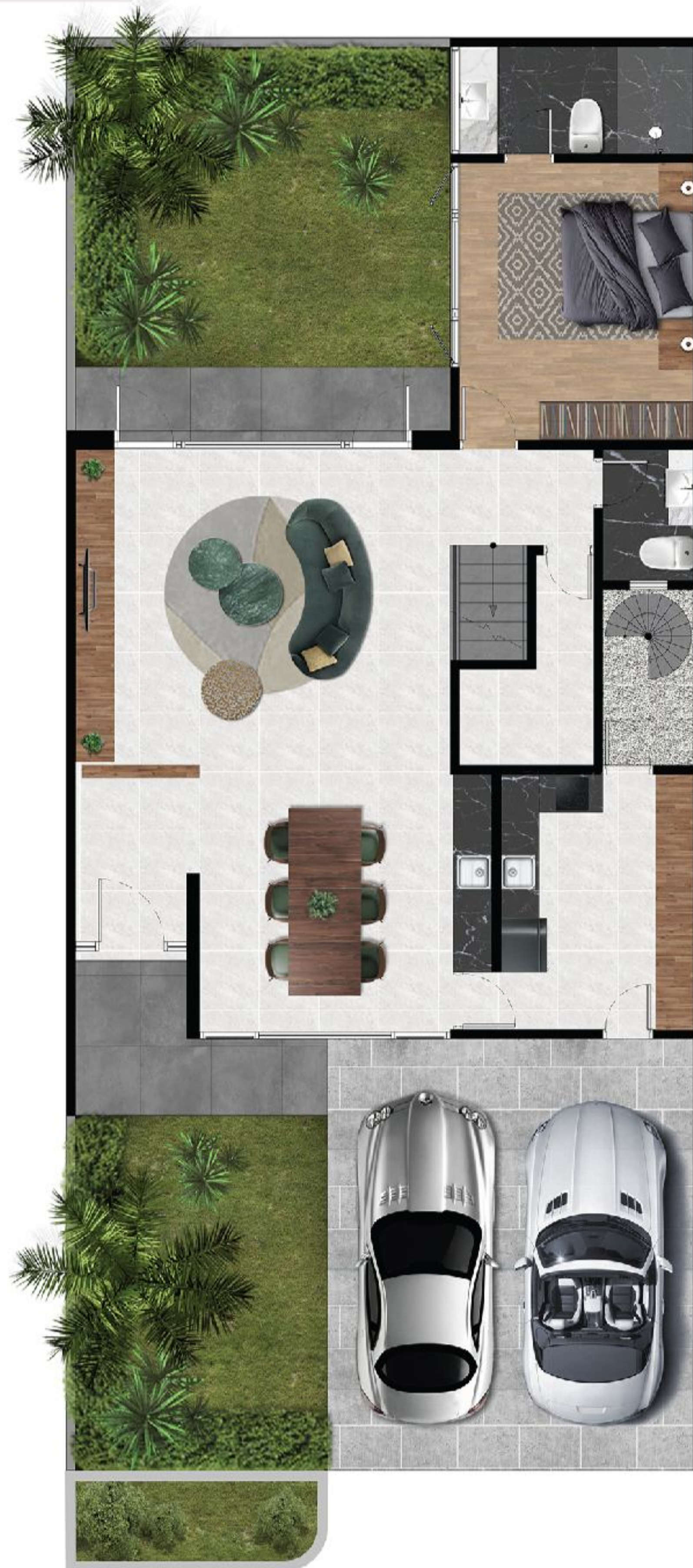
/RV 1.0

RÉSERV

RESIDENCE
TYPE

IMAGINED BY  DIAN ISTANA

FIRST FLOOR



SECOND FLOOR



THIRD FLOOR



RÉSERV

SITE PLAN

IMAGINED BY  DIAN ISTANA



AIR	PDAM
LISTRIK	4.400 Watt
SAKLAR & STOP KONTAK	Simon
CARPORT	Batu Andesit
RAILING TANGGA	Plat Besi + Kayu
PONDASI	Mini Pile / Bore Pile
ATAP	Bitumen
LANTAI	
RUANG UTAMA	Granite Tile
RUANG TIDUR	Granite Tile
TANGGA	Granite Tile
KAMAR MANDI	Granite Tile
DAPUR	Granite Tile
RUANG PEMBANTU	Granite Tile
KAMAR MANDI	
KAMAR MANDI	Monoblok, Wastafel, Fitting & Shower ex. TOTO
MEJA WASTAFEL	Granite Tile
KAMAR MANDI SERVIS	Closet Jongkok ex. TOTO
DAPUR	Dinding & Meja Granite Tile
PINTU & JENDELA	
KUSEN & PINTU UTAMA	Kayu Merbau
KUSEN & JENDELA	Aluminium ex. YKK atau setara
KUSEN & PINTU DALAM	Kayu Merbau
FINISHING DINDING	
DINDING LUAR	Plester Aci, Cat Dinding Weathershield
DINDING DALAM	Plester Aci, Fin. Cat Dinding

/THE NAME YOU CAN TRUST

Having been in existence for over 40 years, DIAN ISTANA GROUP is known as one of the pioneer of real estate developers in Surabaya. During the years, we have grown to be one of the most dependable developers with various successful projects. The Company and its subsidiaries have substantial interests in real estate & property development including landed houses, apartments, townhouses & commercial areas. We currently have ongoing projects in Surabaya, Sidoarjo, Gresik, Bali & Jakarta.

MIDTOWN HOTEL



SWP RESIDENCE



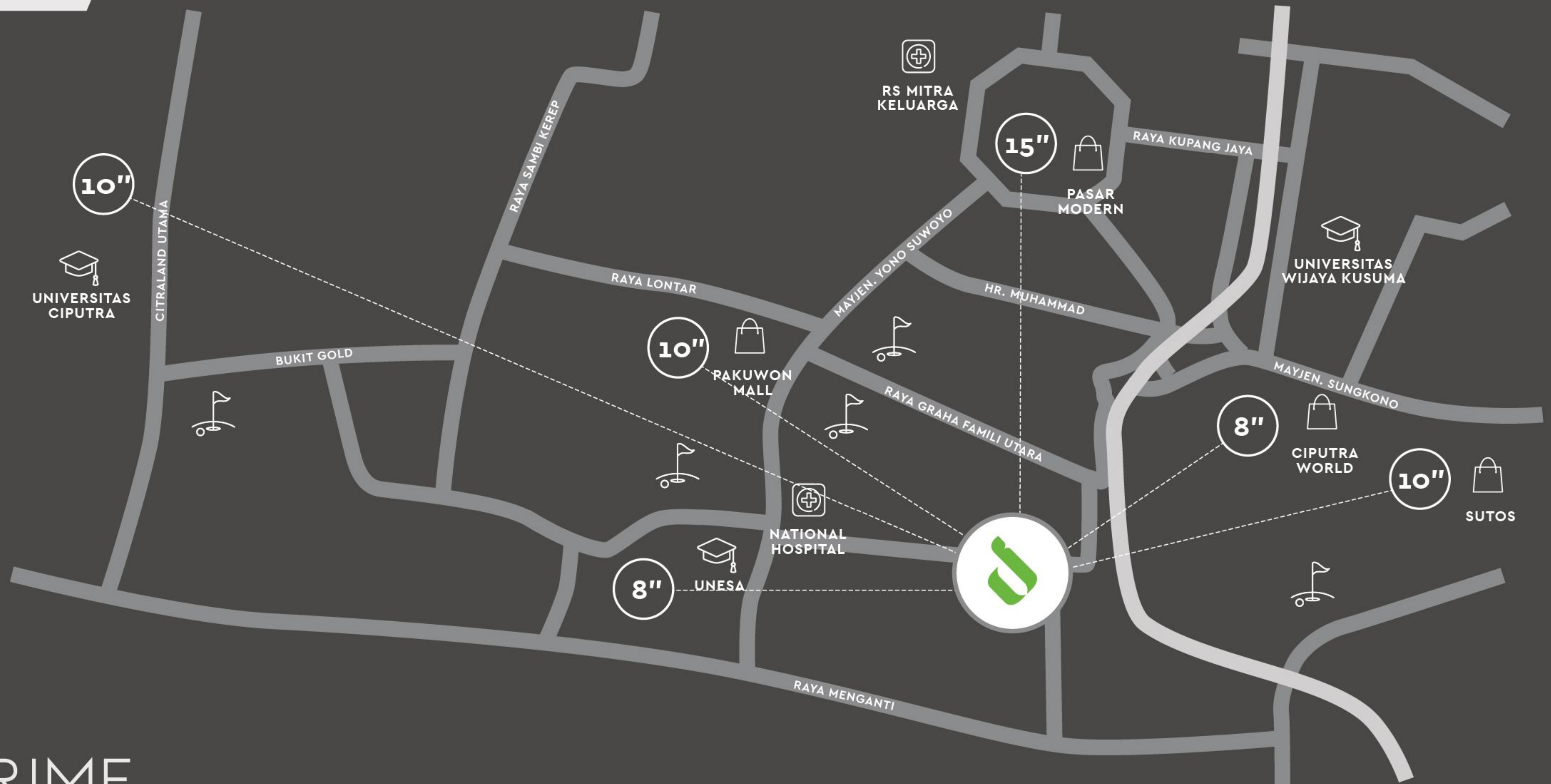
RENAISSANCE HOTEL



RÉSERV

LOCATION
MAP

IMAGINED BY  DIAN ISTANA



PRIME
LOCATION



HOSPITAL



MALL



GOLF COURSE



SCHOOL & UNIVERSITY



STREETS



HIGHWAY

8" TO NEAREST MALL
8" TO GOLF COURSES
10" TO TOLL GATE
15" TO F&B AREA



DIAN ISTANA

A NAME TO TRUST

MARKETING OFFICE CLUBHOUSE DIAN ISTANA

JL. RAYA DIAN ISTANA, SURABAYA 60187

☎ +62 31 **7530123**

💬 +62 81 **55299 000**

INFO@DIAN-ISTANA.COM

DISCLAIMER While every reasonable care has been taken when preparing this brochure, the developer and it's agents cannot be held responsible for any inaccuracies. All statements are believed to be correct but are not to be regarded as statements or representation of fact. All information and specifications are current at the time of print and are subject to changes as maybe required and cannot form part of an offer or contract. All plans are subject to any amendments approved by the relevant authority. Rendering and illustrations are artist impressions only and cannot be regarded as representation of fact. Floor areas are approximate measurements and subject to final survey.